

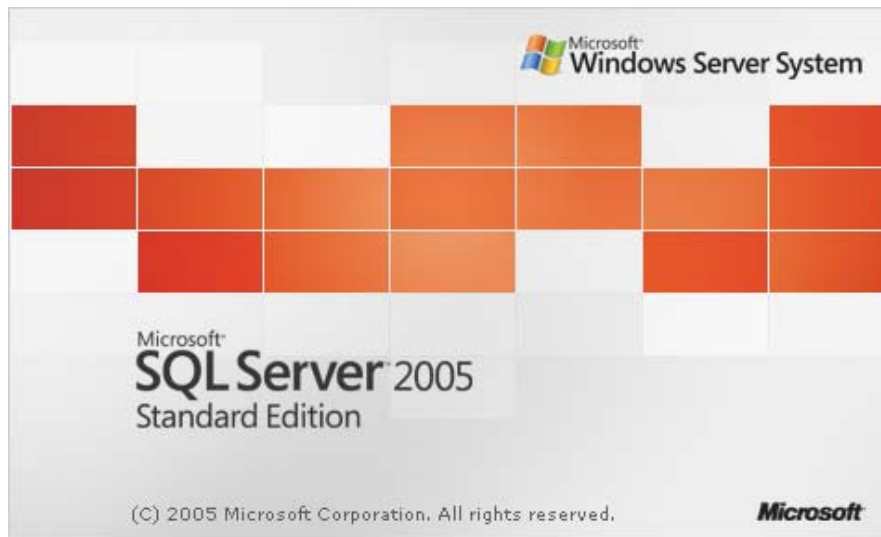
INSTALLATION GUIDE FOR MICROSOFT'S SQL SERVER 2005 DATABASE SERVER SOFTWARE

This chapter of the **Product Kit Installation Guide** is designed to specifically provide you with complete installation instructions when installing the **Microsoft SQL Server 2005 Database Server and Client Software**. These applications should be loaded and configured and operational **before** installing the **Infinity POWER** accounting system (Version 7.2 or higher), if this is the database configuration you have chosen to utilize. Keep in mind, the accounting data will be stored on this server which should be a separate “**physical server**” than the actual “**accounting server**” that is calling the **SQL Database Server**. Likewise, you should never run **Infinity POWER** programs on the same server which is also hosting Microsoft's **Exchange Server** application. It will severely degrade resources away from your accounting application and cause a serious slow down in processing.

Therefore, you should have “**two**” servers. An “**accounting program**” server and an “**SQL database**” server.

SETUP.EXE (Installation of Microsoft SQL Server 2005 Database Server)

Place the **Microsoft SQL Server 2005 CD-ROM** into your **CD-ROM** drive on your computer system. The **CD-ROM** will auto start and the following screen will appear:

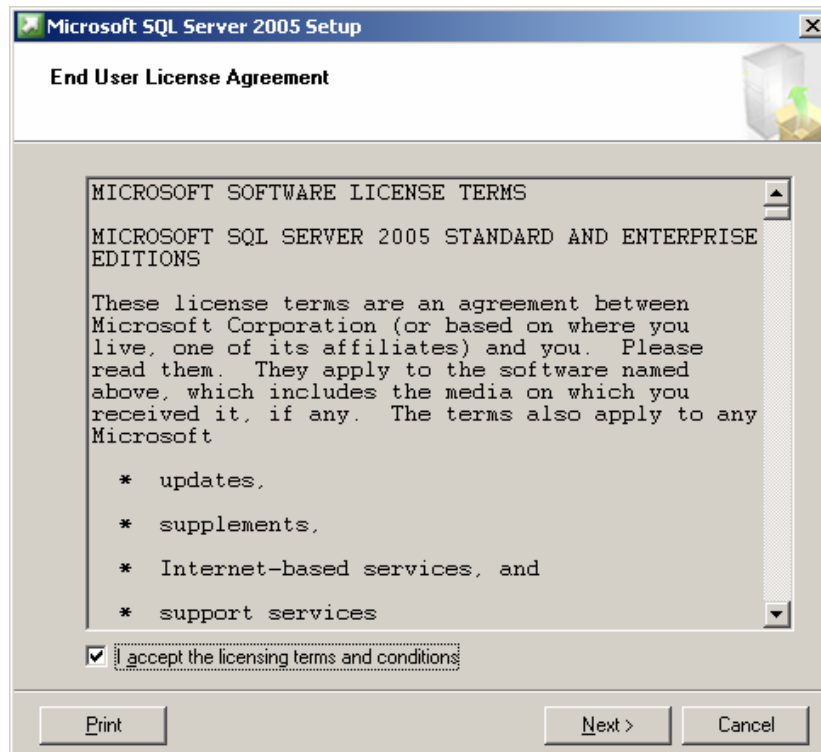


After a few moments of CD-ROM access time, the following screen will appear:

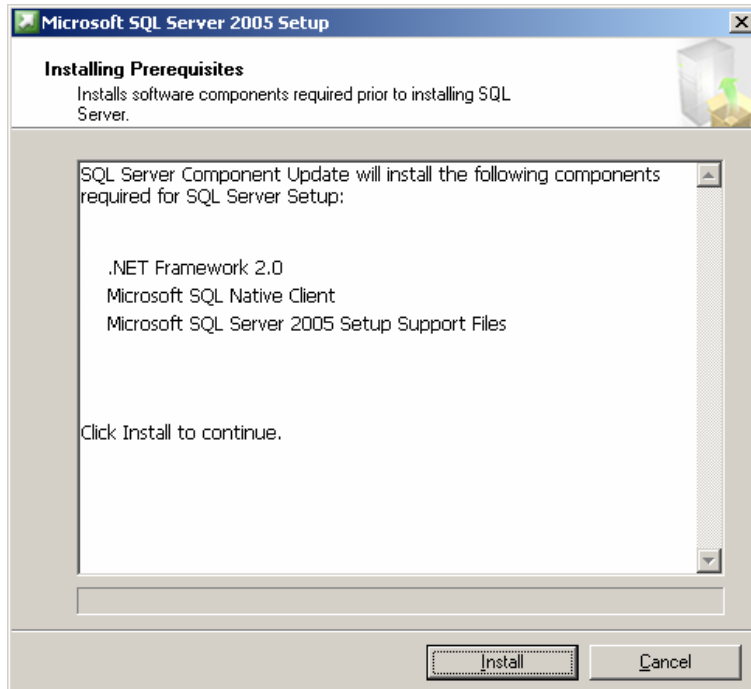


Select the **“Install”** option **“Server components, tools, Books Online, and samples”** and the Welcome screen will appear. The End User License screen displays.

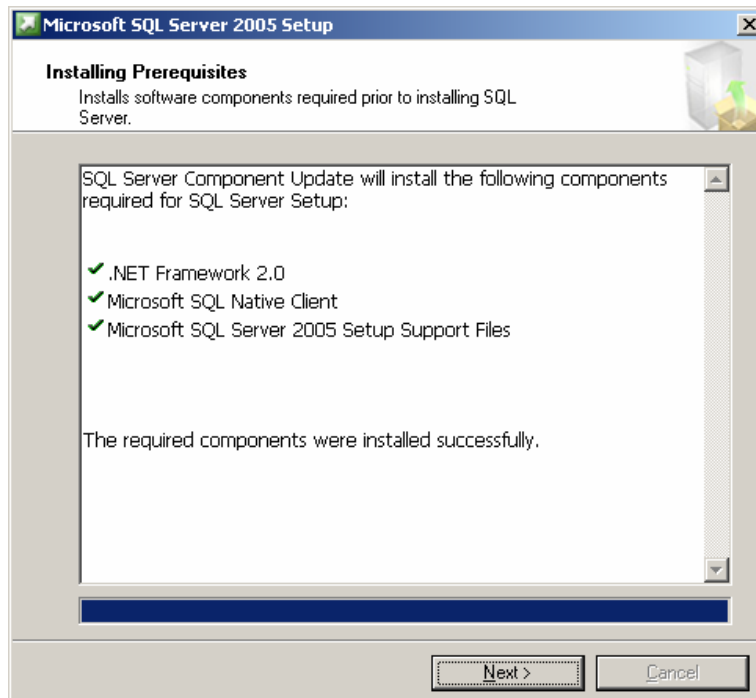
Select the **“I accept the licensing terms and conditions”** check box and then click the **“Next”** button.



The “**Install Prerequisites**” screen displays listing the components that will be installed on your system. Click the “**Install**” button to continue. The installation will begin.



Once the SQL Server Component Update installation is completed, click the “**Next**” button.



The Microsoft SQL Server Installation program displays.



Click the “Next” button to continue the installation. The Registration Information screen displays.

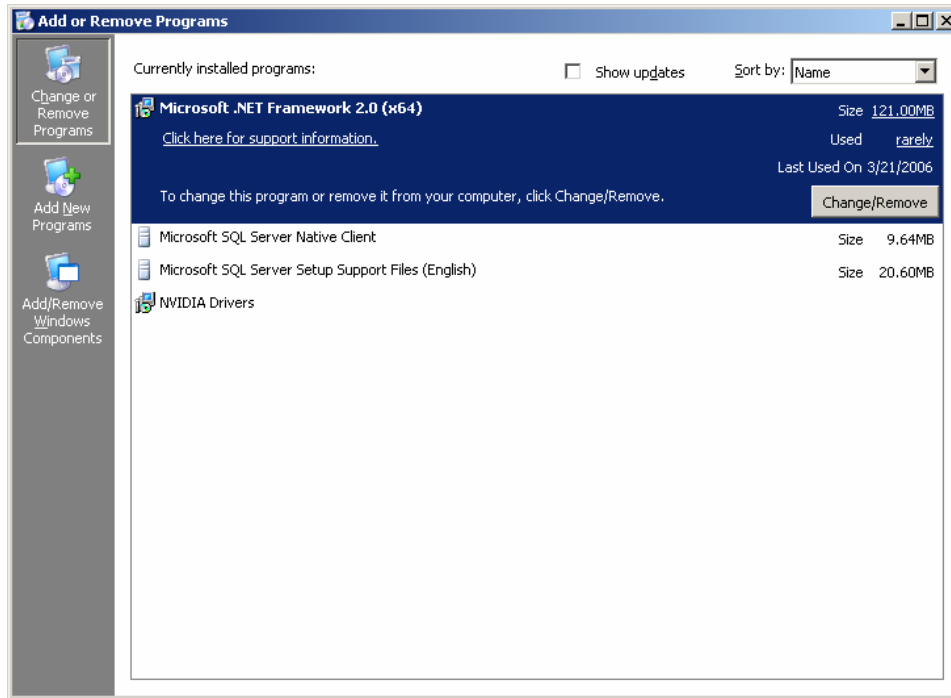


Enter the user name in the **Name** field for whom the product will be registered under. Optionally enter the company name then click the “Next” button.

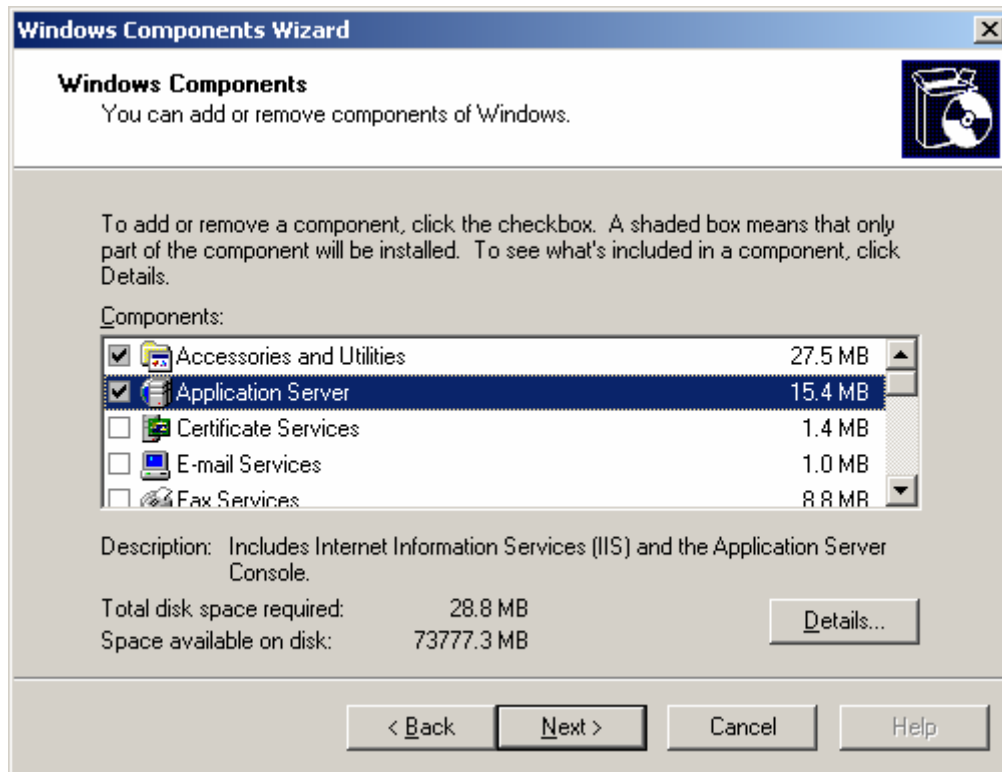
The system will review the server status and display warnings based on the server status. You may be prompted to install any missing system requirements if necessary. (i.e. IIS Server).

To Install the IIS Server:

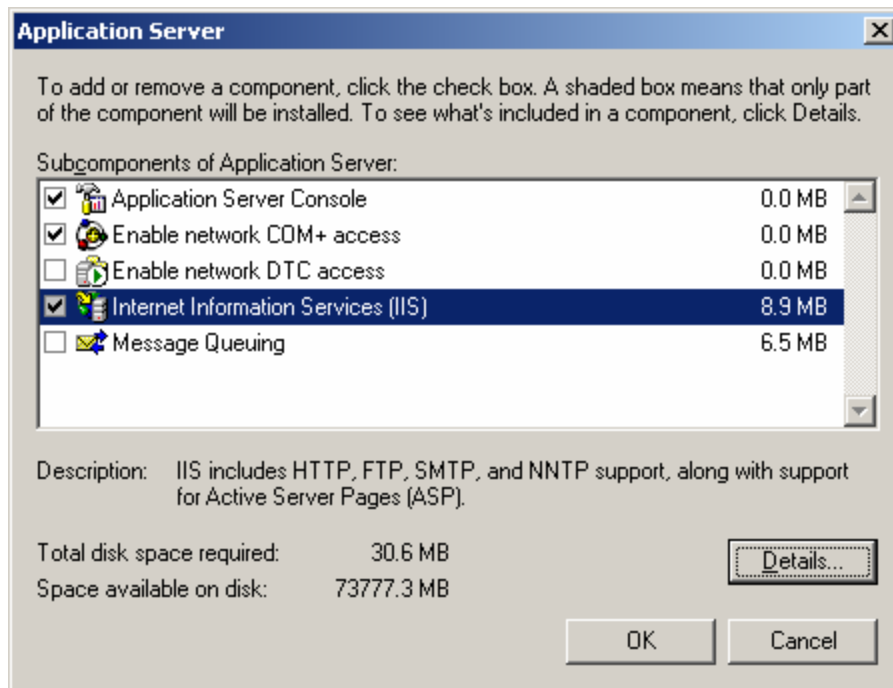
From Windows, click on the **“Start”** button in the lower left corner of the screen, select **“Settings”** then the **“Control Panel”** option. From the Control Panel screen, double-click on the **“Add or Remove Programs”** icon.



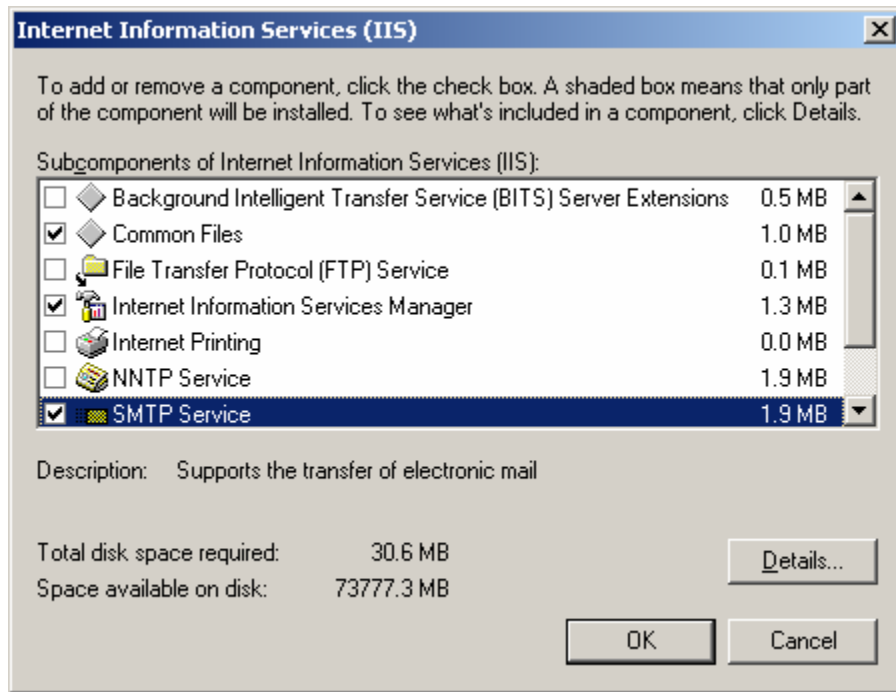
From the Add or Remove Programs screen, click the **“Add/Remove Windows Components”** option. The Window’s Components Wizard screen displays.



Check the “**Application Server**” component and then click the “**Details**” button.

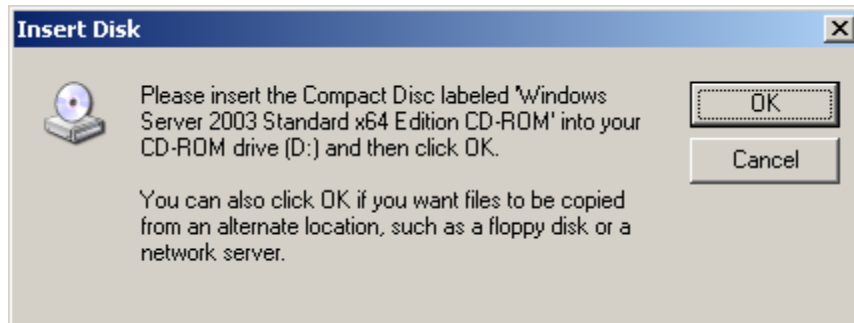


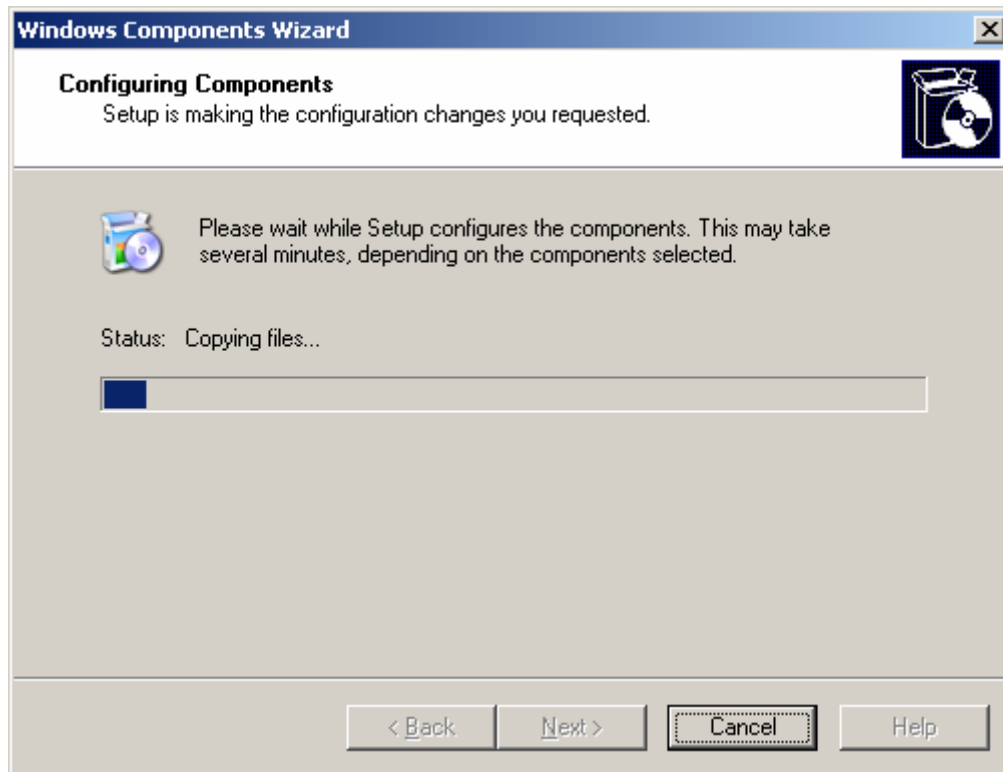
Ensure the IIS Services (IIS) checkbox is selected, then click the “**Details**” button.



Ensure the SMTP Service is selected. Click the “**OK**” button.

You will be prompted to insert any CD-ROM if your system is missing any selected components.



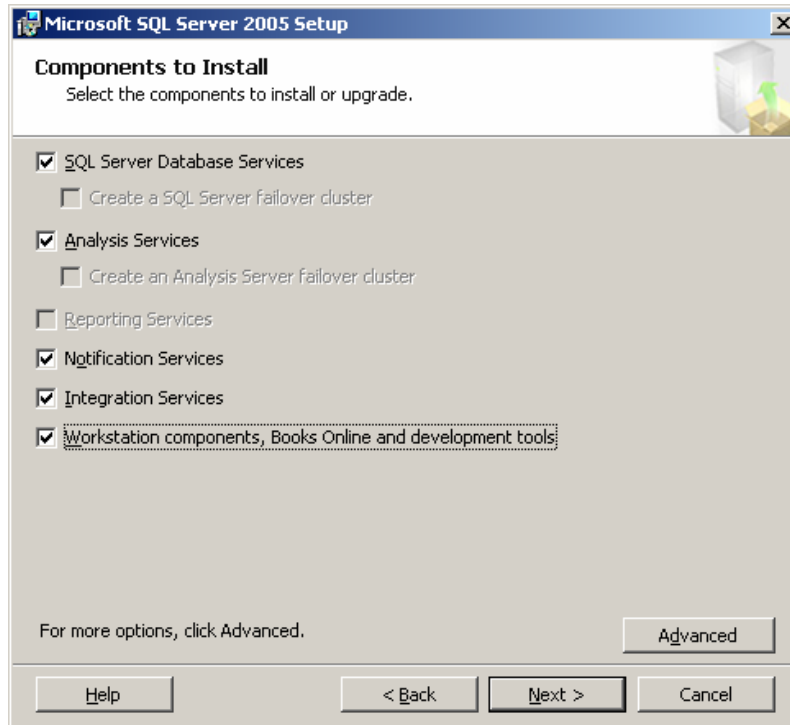


When the selected components are installed, the **Completing the Windows Components Wizard** screen displays.



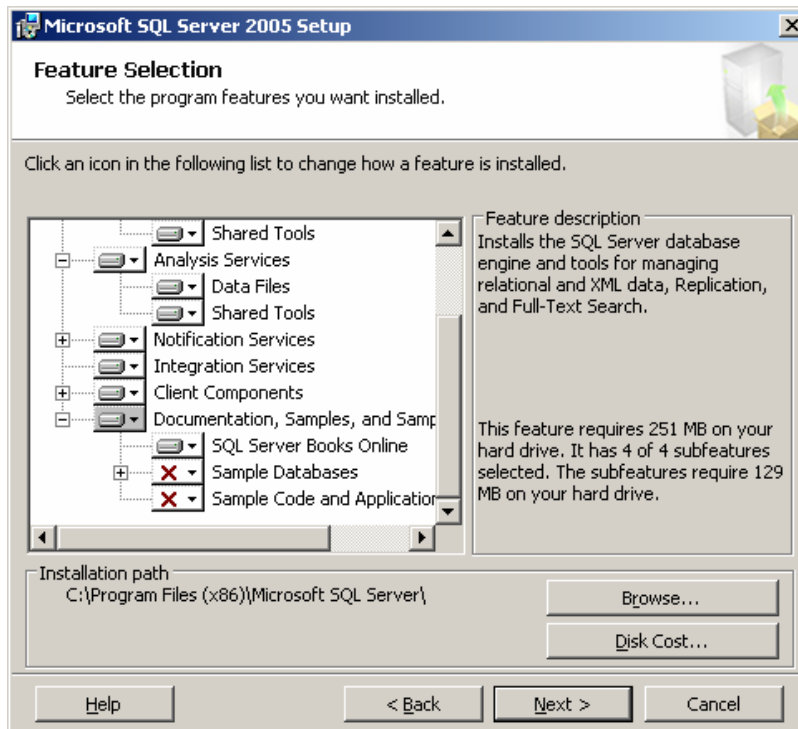
Click the **“Finish”** button.

After you have completed responding to any warnings, reinsert the **Microsoft SQL Server 2005** CD-ROM and continue with the installation.

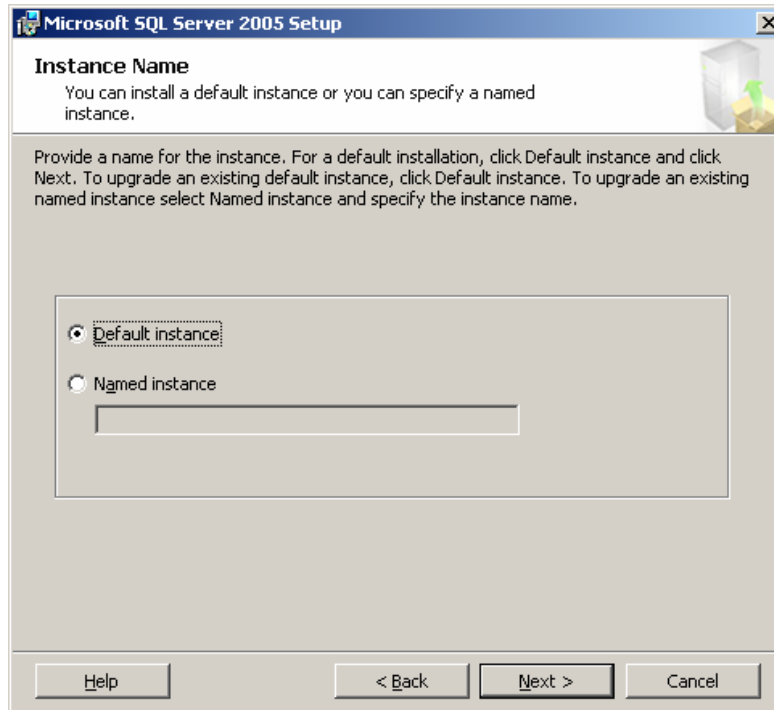


Select the desired components to install. Click the **“Advanced”** button for more detailed options. Click the **“Next”** button to continue the installation.

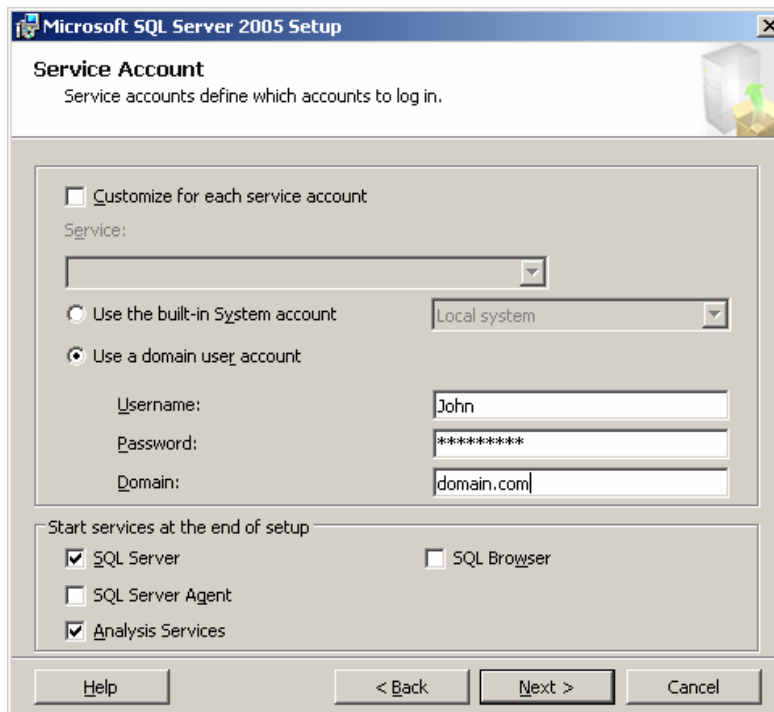
The Feature Selection screen displays.



Select the features that you want installed. If you want to change the default Installation path, click the **“Browse”** button. Click the **“Next”** button to continue with the installation. The Instance Name screen displays.

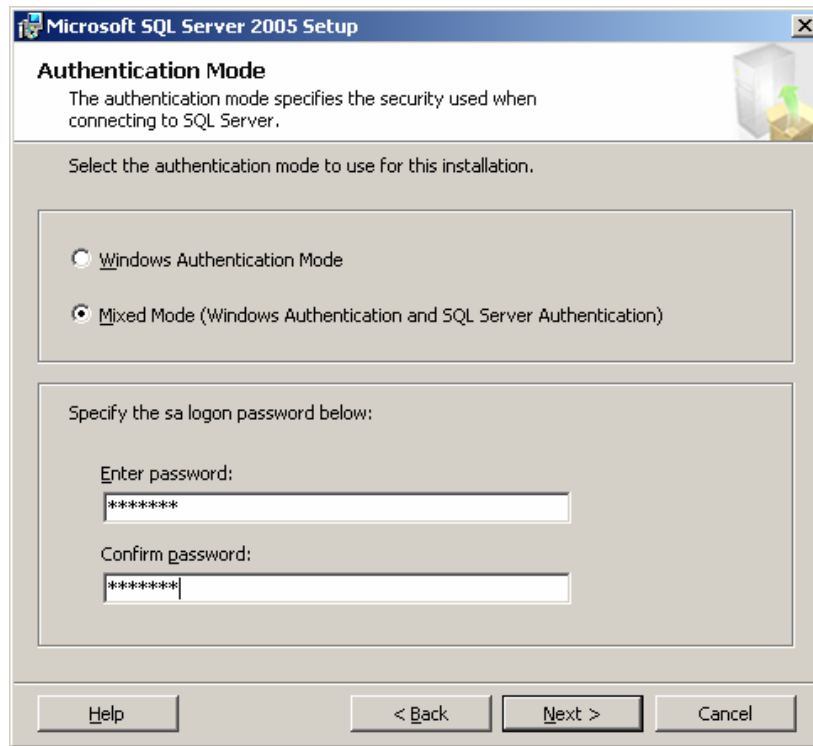


Select the desired instance name choice, either default or named, and then click the **“Next”** button to continue with the installation. The Service Account screen displays.

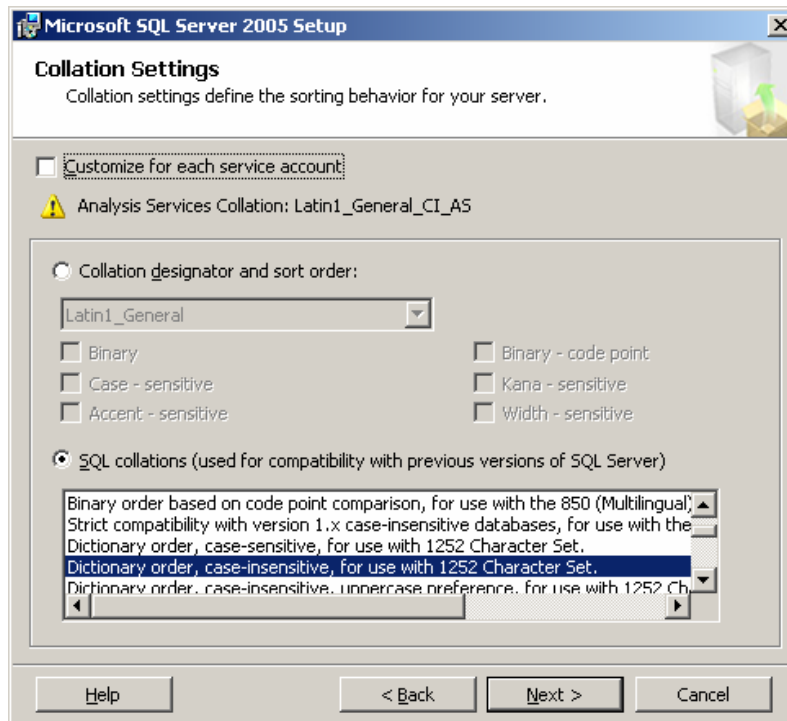


If on a domain account, enter the domain user account username, password, and domain with appropriate rights and permissions. Select the desired services to start at the end of the setup and click the **“Next”** button.

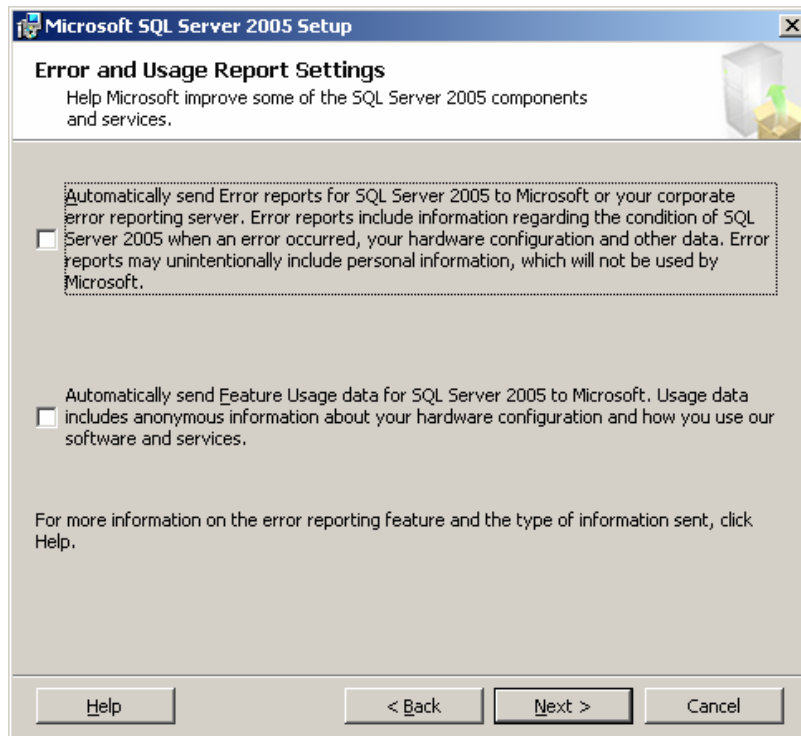
The Authentication Mode screen displays.



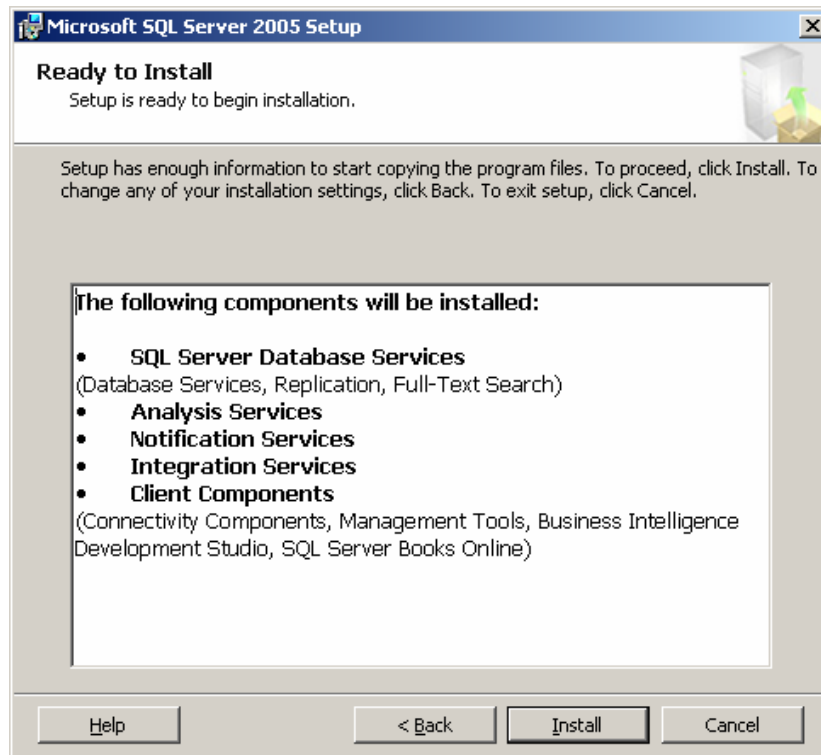
It is recommended to select the “**Mixed Mode**” option for more levels of security and then click on the “**Next**” button. The Collation Settings screen displays.



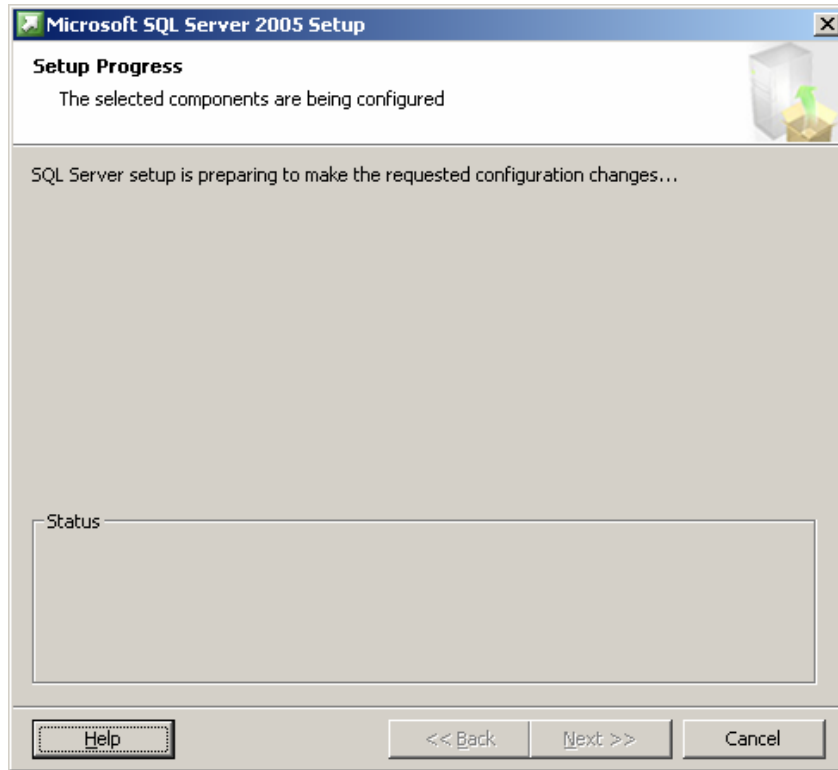
Keep the default settings and click the “**Next**” button. The Error and Usage Report Settings screen displays.



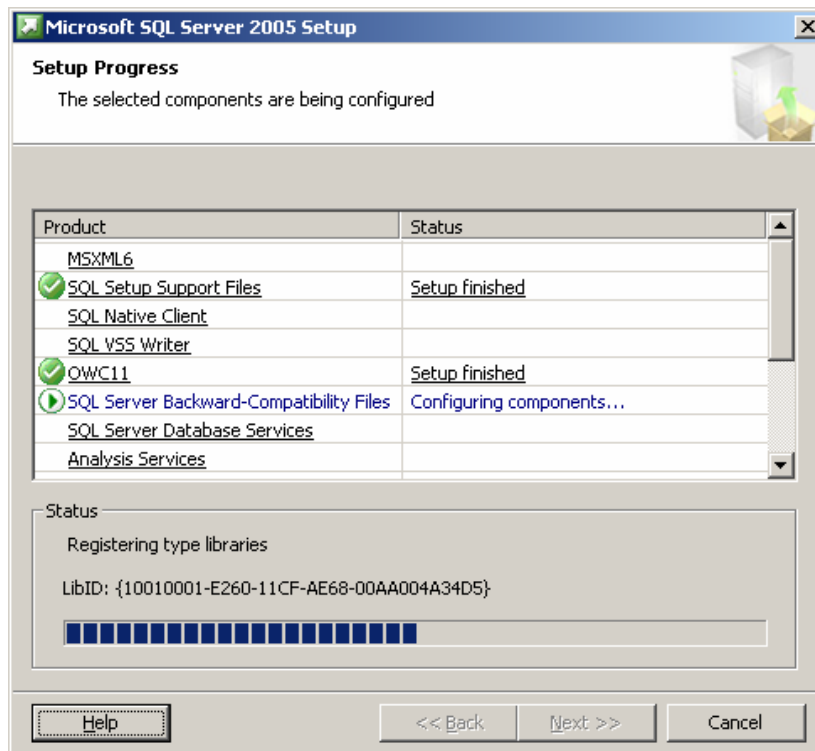
Click the desired error/report settings or simply click the “**Next**” button without making any selections. The Ready to Install screen displays listing the components that will be installed based on selections made earlier.

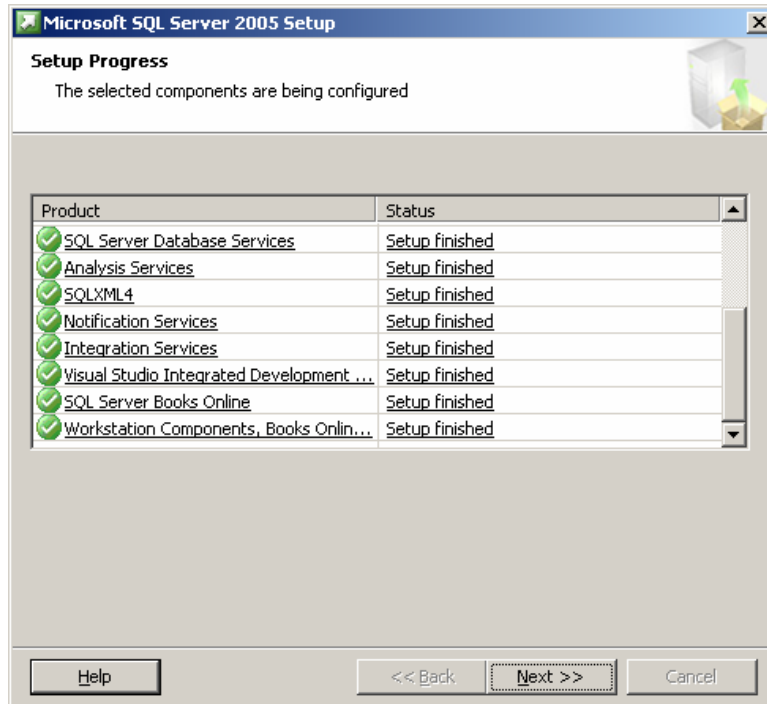


Click the “**Install**” button to continue with the installation. The Setup Progress screen displays.

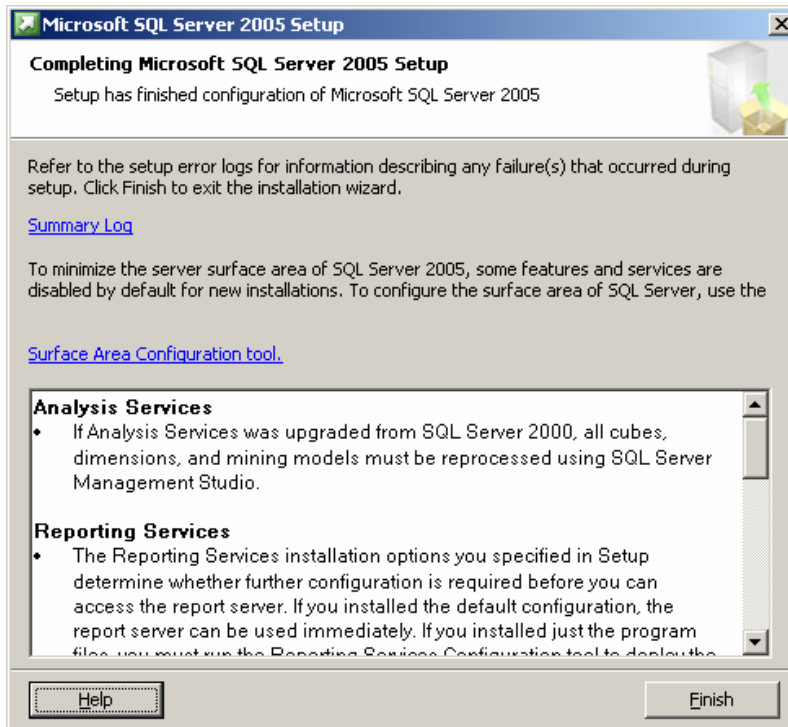


After a few moments, the screen list the components being configured with a status of each listed.





Once the setup completes, the **Completing Microsoft SQL Server 2005 Setup** screen displays.



Click the **“Finish”** button.

The Native Client software also needs to be installed on each client's workstation in order to communicate to the SQL server. The Native Client software is provided as a convenience on the Data Pro CD-ROM or in the *power* directory.

The Native Client software installation files are named:

sqlncli.msi = 32 bit OS's

sqlncli_x64.msi = 64 bit OS's

Also, it may be necessary to update a client's "**windows installer**" component to install the Native Client mentioned above. This component is also provided as a convenience to our users.

The file is named:

windowsinstaller-kb893803-v2-x86.exe

Congratulations, you have completed your installation of Microsoft SQL Server 2005 and Native Client software on the server!

This page intentionally left blank.