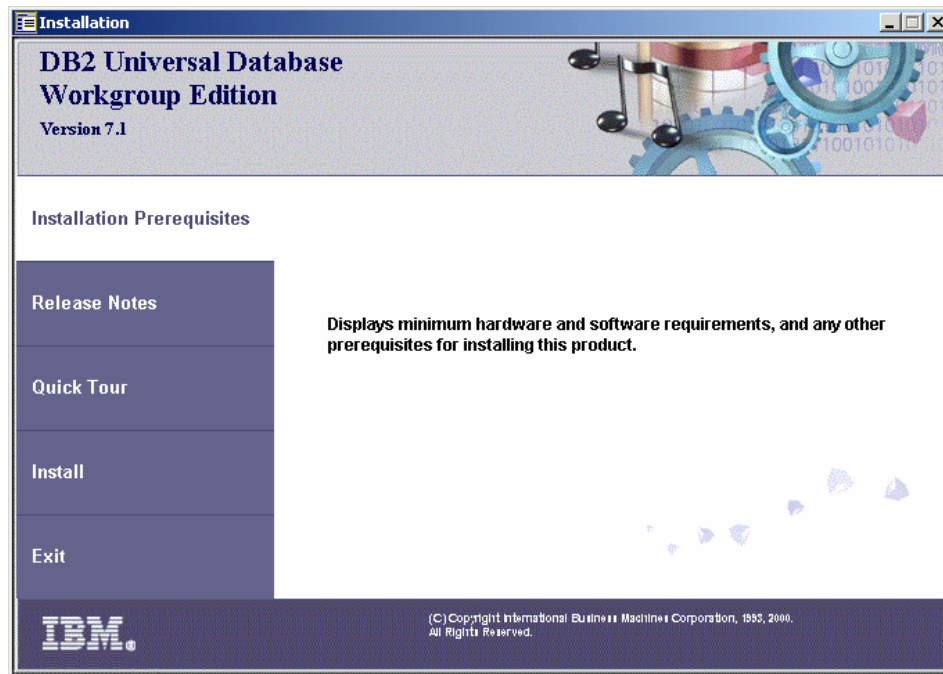


INSTALLATION GUIDE FOR IBM's DB2 DATABASE SERVER SOFTWARE

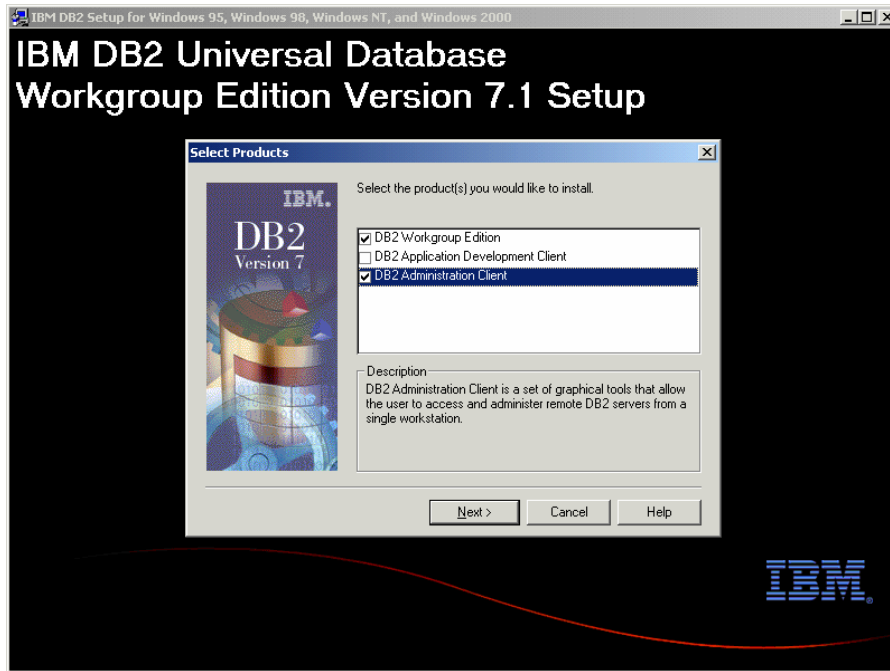
This chapter of the **Product Kit Installation Guide** is designed to specifically provide you with complete installation instructions when installing the **Version 7.1 IBM DB2 Database Server and Client Software**. These applications should be loaded and configured and operational **before** installing the **Infinity POWER** accounting system, if this is the database configuration you have chosen to utilize.

SETUP.EXE (Installation of IBM DB2 Database Server V7.1)

Place the **IBM's "DB2 Server for Windows CD-ROM** into your CD drive on your computer system. From **Windows**, click on **"Start"** and select **"Run"** from the **Task Bar**. In the **Open** box, enter the drive letter for your **CD:\setup.exe**.

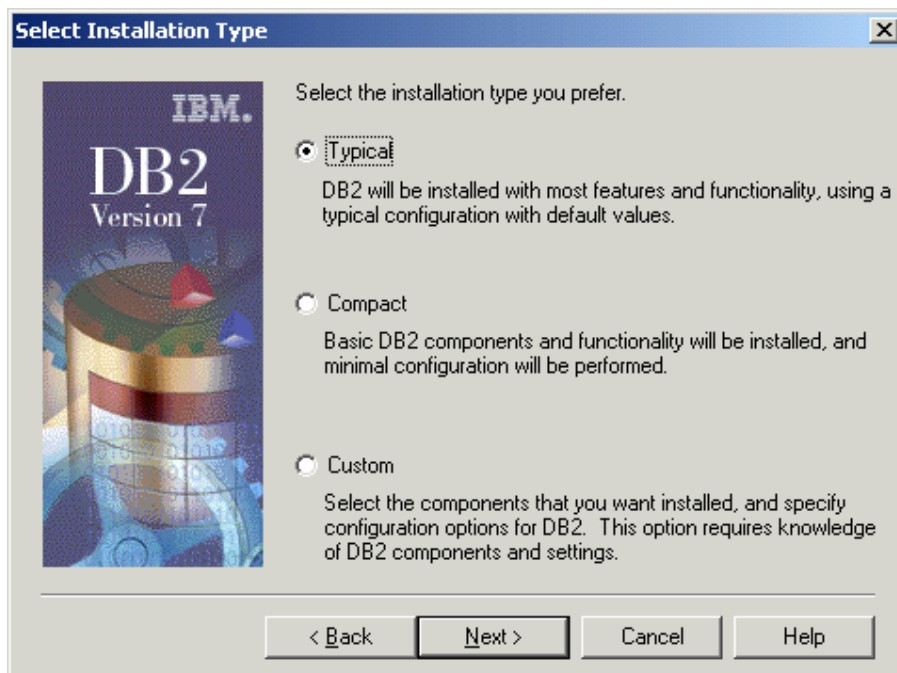


Select **"Install"** to begin the installation process and the following screen will appear:



Select both, the “**DB2 Workgroup Edition**” and the “**DB2 Administration Client.**” Click on the “**Next**” button to continue.

The next screen to appear will be the “**Select Installation Type**” screen.



Click on “**Typical**” and then on the “**Next**” button to continue the installation routine. The next screen to appear will require you to “**Enter Username and Password for Control Center Server.**”

Enter Username and Password for Control Center Server

IBM.
DB2
Version 7

Enter the username and password that the Control Center Server will use to log on to your system.

Username: db2admin

Password: *****

Confirm password: *****

Use the same values for the remaining DB2 Username and Password settings

< Back Next > Cancel Help

On this screen you will specify a password for the default **DB2 User** (*db2admin*). If the user does not exist, the system will ask if you wish to add them. Be sure to have the checkbox marked for **“Use the same values for the remaining DB2 Username and Password settings.”** Click on the **“Next”** button to continue.

A screen will appear with a summary of the installation. On the next page is an example of what you may see.

Example of Summary of Installation Screen

Products to Install:
DB2 Workgroup Edition
DB2 Administration Client

Setup Type:
TYPICAL

Components to Install:
Required DB2 components
Communication Protocols
APPC
IPX/SPX
Named Pipes
NetBIOS
TCP/IP
Application Development Interfaces
JDBC Support
SQLJ Support
IBM enhanced Java Runtime Environment
ODBC Support
OLE DB Support
System Bind Files
DB2 Query Patroller Client
QueryMonitor Tool
QueryEnabler Tool
Documentation
Administration Guide
APPC, CPI-C, and SNA Sense Codes
Command Reference
Connectivity Supplement
Data Movement Guide
DB2 Query Patroller Administration Guide
DB2 Query Patroller Installation Guide
DB2 Query Patroller User's Guide
DB2 Quick Beginnings for Windows NT
DB2 Release Notes
DB2 Replication Guide and Reference
Glossary
Install and Configure Supplement
Message Reference
SQL Getting Started
SQL Reference
System Monitor Guide and Reference
Troubleshooting Guide
What's New
Warehouse Center Administration Guide
Warehouse Manager Installation Guide
DB2 UDB Quick Tour
OLAP Setup and User's Guide

OLAP Spreadsheet Add-in User's Guide for 1-2-3
OLAP Spreadsheet Add-in User's Guide for Excel
DB2 Quick Beginnings for Unix
Data Warehousing Tools
Warehouse Server
Data Warehouse Center
Warehouse Local Control Database
Data Warehouse Center ODBC Drivers
DB2 OLAP Starter Kit
DB2 OLAP Starter Kit Server
DB2 OLAP Starter Kit Spreadsheet Add-in
DB2 OLAP Starter Kit Desktop
Base DB2 UDB Support
Administration and Configuration Tools
Client Configuration Assistant
Client Tools
Command Center
Control Center
Database Tools
Event Analyzer
LDAP Directory Exploitation
Web Administration
Getting Started
First Steps
Sample Databases
Business Intelligence Tutorial

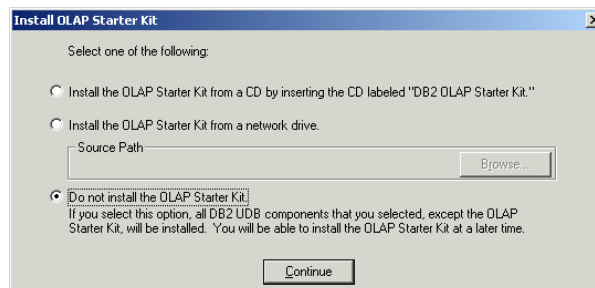
DB2 Instance:
Log On Username:db2admin
TCP/IP
Service Name:db2cDB2
Port Number:50000
Named Pipes

Administration Server:
Log On Username:db2admin
TCP/IP
Service Name:db2cDB2DAS00
Port Number:523
Named Pipes

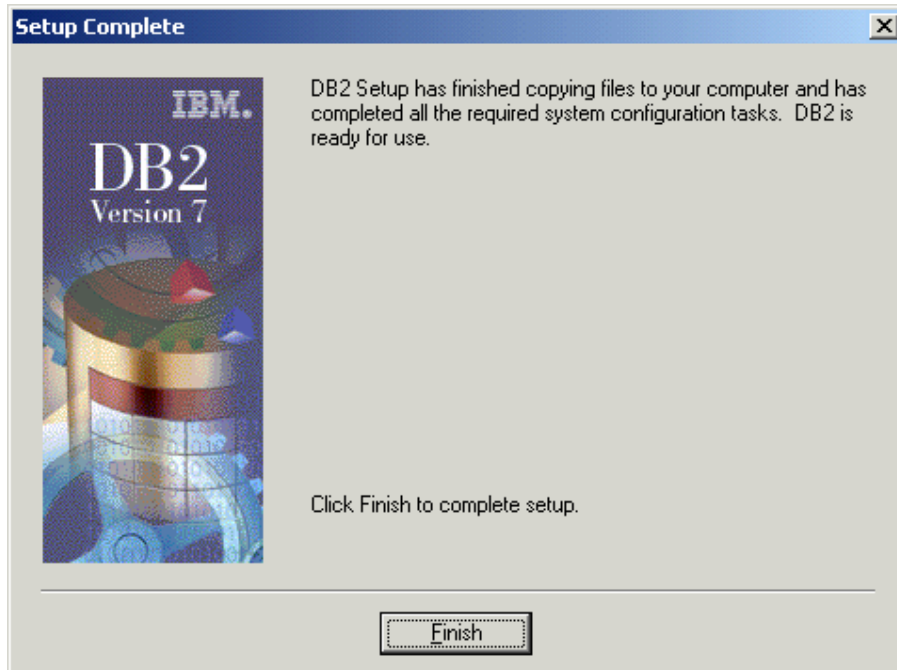
Target Directory:
C:\Program Files\SQLLIB

Program Folder:
IBM DB2

After the installation takes place, the system will ask if the **OLAP Starter Kit** is to be installed. **Infinity POWER** does not require this application to be installed.



Click on the option **“Do not install the OLAP Starter Kit.”** Click on the **“Continue”** button to proceed. The **IBM DB2 Database Server Installation and Setup** is now complete.



Click on the **“Finish”** button to complete setup.

SETUP.EXE (Installation of IBM DB2 Client Software V7.1)

The installation of the **IBM DB2 Client Software** should be installed after the **IBM DB2 Database Server** is installed and configured.

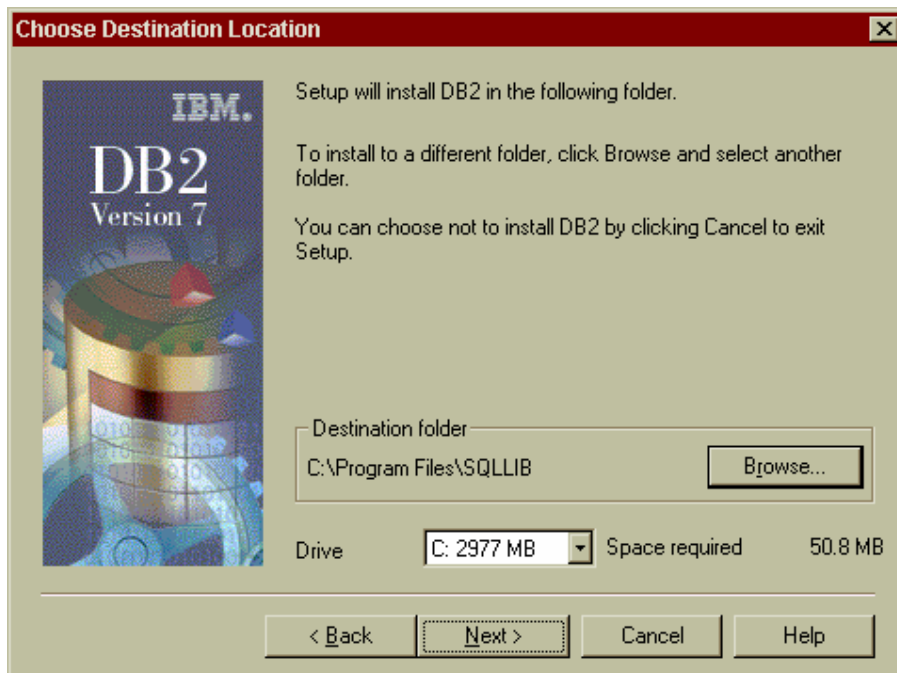
Place the **IBM’s “DB2 v7.1 Run-Time Client CD-ROM** into your CD drive on your computer system. From **Windows**, click on **“Start”** and select **“Run”** from the **Task Bar**. In the **Open** box, enter the drive letter for your **CD:\setup.exe**.

Double click on the **setup.exe** file or highlight it and click on the **“Open”** button. When this happens, the Install program will load and begin installing the **IBM DB2 Client Software**.

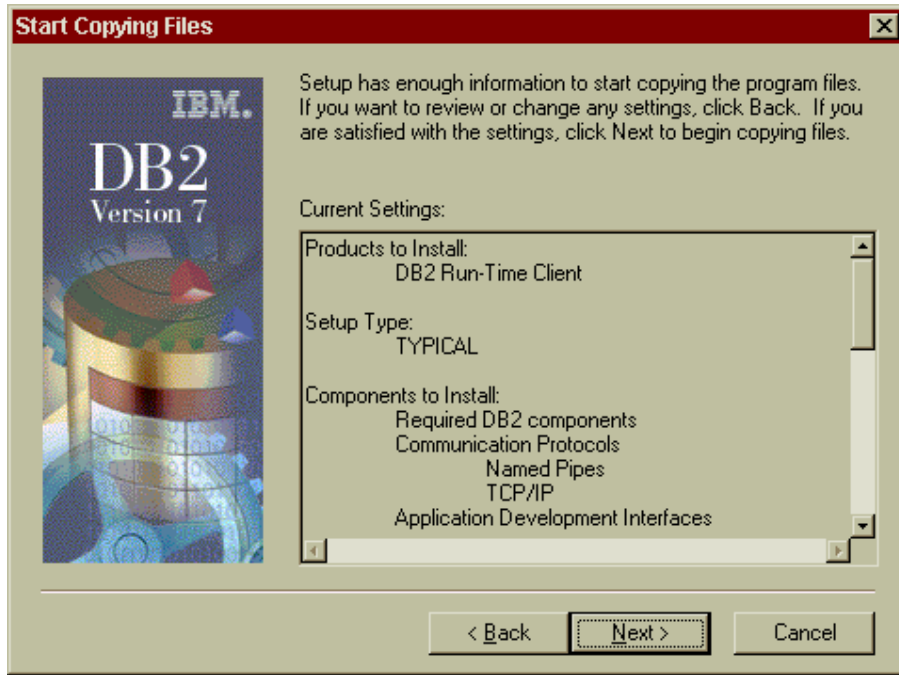
This **Welcome Screen** introduces you to the **IBM DB2 Client Software**. If you wish to continue the installation, click on the **“Next”** button. To abort the installation, click on **“Cancel.”** The next screen to be displayed is the **Select Products**.



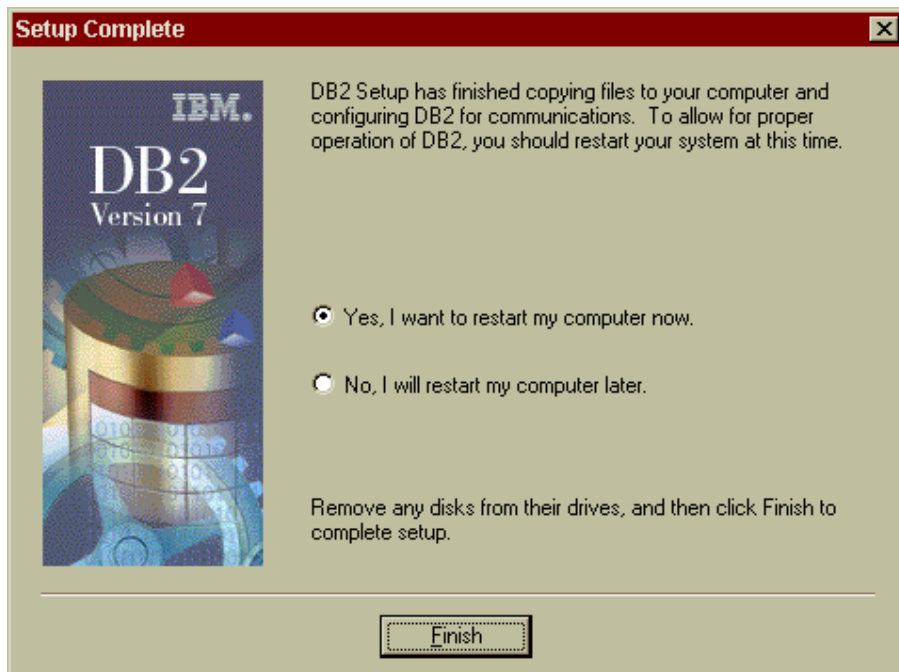
Accept the default product to install. In this case it would be **DB2 Run-Time Client**. Click on the “Next” button to continue. The next screen is used to select the **Destination Location**.



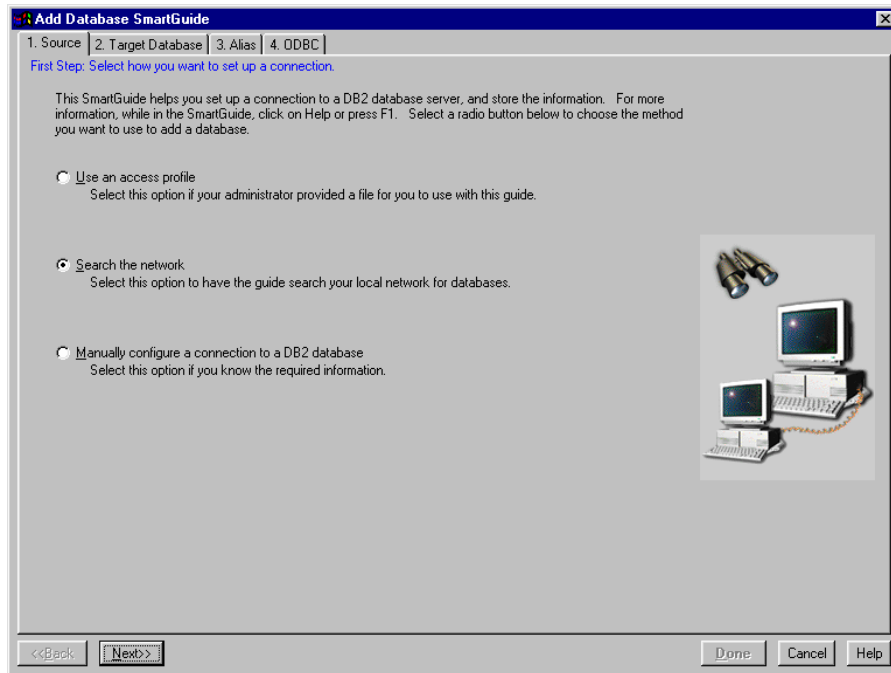
Click on the “Next” button to continue on to the verification screen, which is shown below.



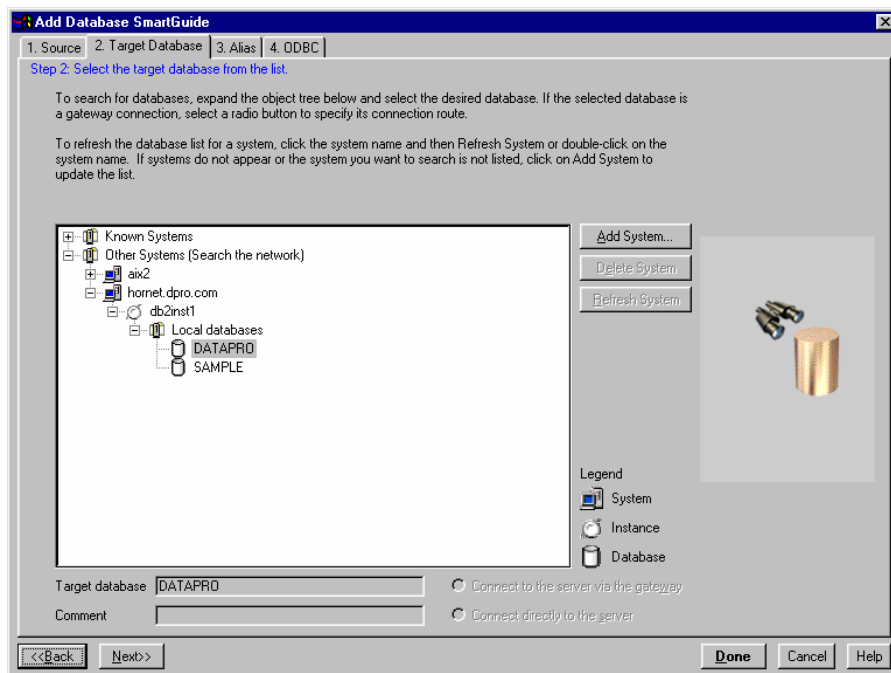
Once you click the “Next” button the system will begin transferring program files. Once all files have been transferred the installation will require you to reboot your computer to update the registry files as shown in the picture below.



Click on the **“Finish”** button and your system will begin the restart process. When your system had finished re-booting go to the **“Start”** button and select **“Programs,”** then **“DB2 For Windows98”** and then **“Client Configuration Assistant.”** Click on the **“Add Database”** button to start the *Add Database SmartGuide*.

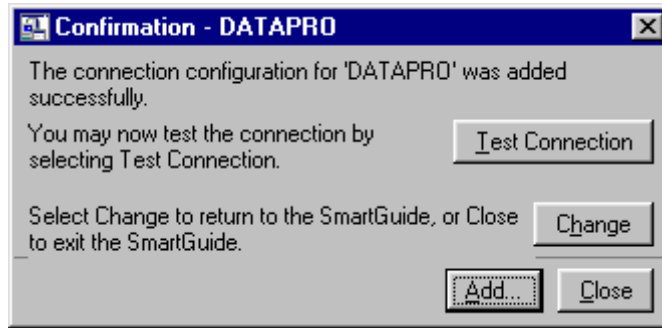


Click on **“Search the Network”** for the **Source** so that the system can auto-browse your network for available **DB2** servers. Click on the **“Next”** button to begin the search.



Click on the **“plus sign (+),”** just to the left of **“Other Systems (Search the network).”** Depending on your network environment, this process may take a while. Once the **DB2** servers have been identified, click on the **“plus sign (+),”** just to the left of the server you wish to connect to. In our example, it is **hornet.dpro.com**.

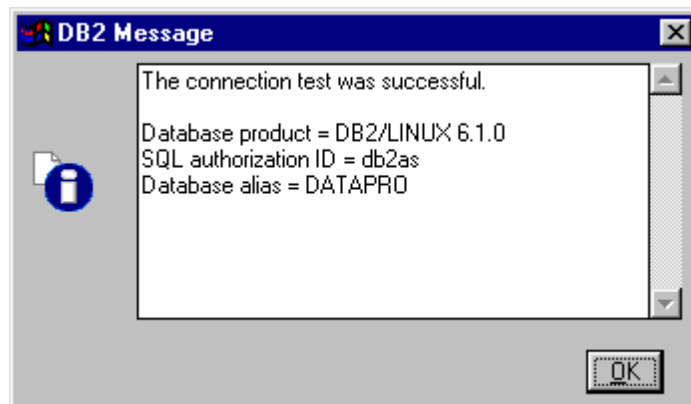
Click on the **“Done”** button to select the **“DATAPRO”** Database. At this time, you have the option to test this connectivity.



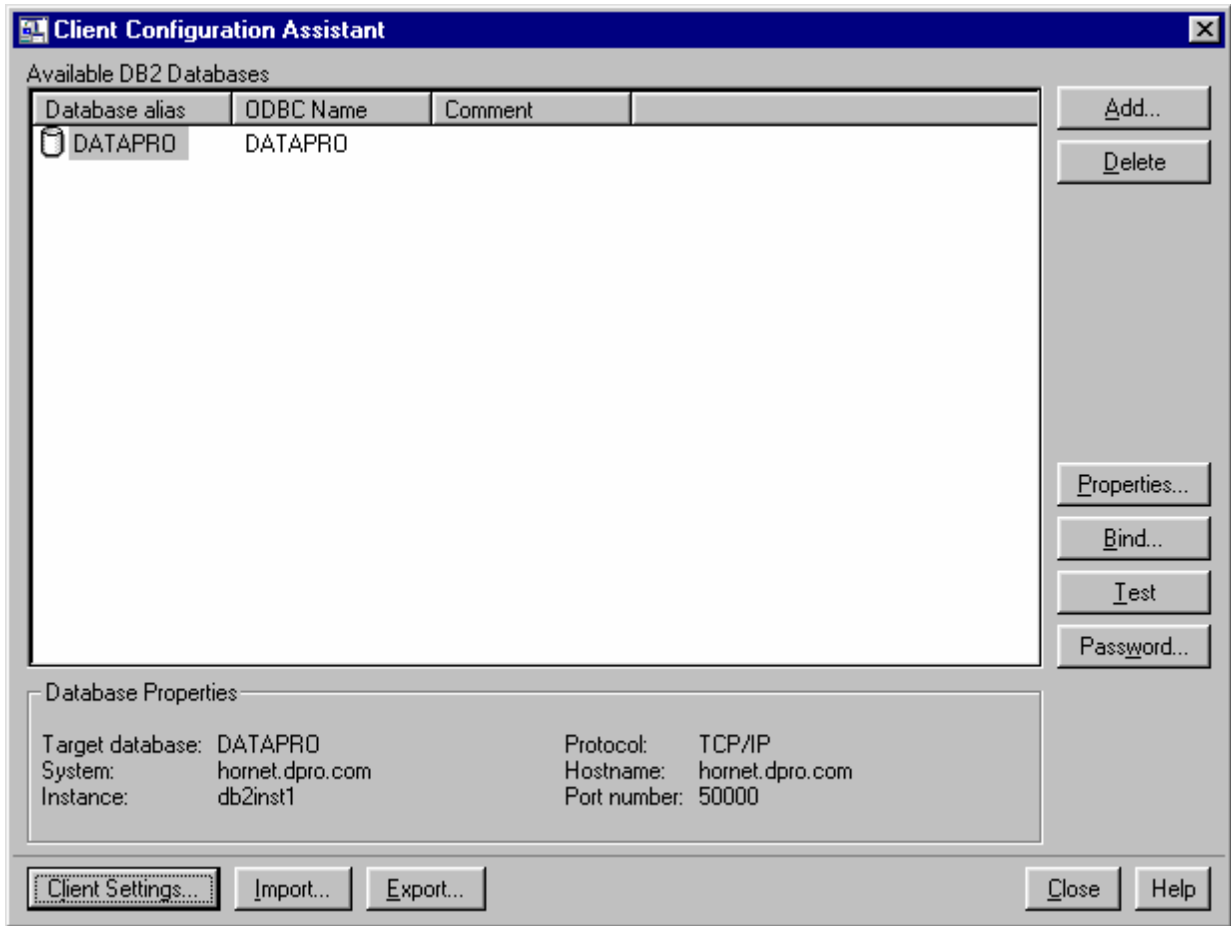
When you click on **“Test Connection,”** you will be presented with the following screen where you would specify a **User ID** and **Password**. This information can be obtained from your **DB2 Administrator**.



Click on the **“OK”** button to begin the testing. If the test was a success, you should receive the following message:



Click on the **“OK”** button to close the above dialog box, which in turn returns you to the **“Test Connection”** dialog box. Once there, click on the **“Done”** button. Here, you will be presented with a new window reflecting your current database connections.



At this time you can click on the **“Close”** button from this window and begin your **Data Pro POWER Installation for DB2**.